

FastCPU v.2.7

Megasoft2000 Ltd 1999 - 2002
Palm Software Division (PSD)

Platform: Palm OS 3.0, 3.1, 3.3, 3.5, 4.0, 4.1

This program is intended to increase (to decrease) the clock frequency of the central processor (CPU), and also to optimize system bus and other system parameters.

Clock frequency control range:

- Minimum frequency - 13 MHz
- Peak frequency - 55 MHz

Note!

1. Before installation make sure the date on your Palm device is valid (use Preferences application).
2. On new VZ devices some frequency values may lead to unstable beam receiving (depends on hardware).
3. On some Palm m505 devices problems with digitizer sensitivity may occur at highly increased frequencies.
4. On some Palm IIIc devices incorrect graphics display is possible at increased frequencies. In that case it is necessary to select optimal frequency for your device which allows to display the information on the screen with image undistorted.
5. This program has 14 days of trial period. Please purchase this program only when you are sure this program works on your device.

Install over FastCPU v.2.x

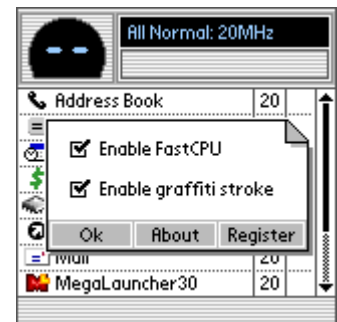
- 1) Launch FastCPU 2.x
- 2) Press the "Menu Icon" button (this button is near Graffiti area).
- 3) Unselect "Enable FastCPU" checkbox and press the "Ok" button.
- 4) Delete FastCPU 2.x application
- 5) Install FastCPU 2.7

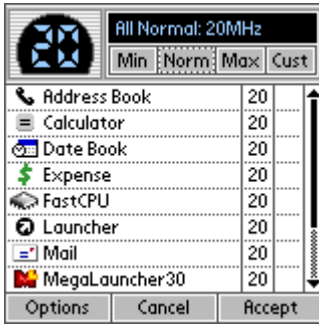
Don't use other programs for CPU frequency increase or decrease at the same time!

How does the FastCPU work?



After the first start press the "Option" button on the lower panel and select checkbox "Enable FastCPU" to activate the program.



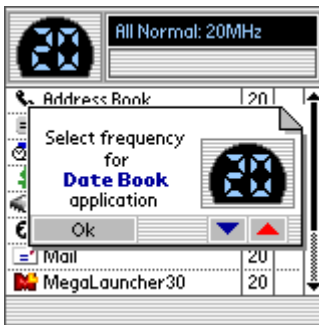


After activating the FastCPU program, the central processor frequency (CPU) will be set in the normal "Norm" position for your device (16/20/33 MHz).

To set the frequency of all applications in a minimal position, press the "Min" button.

To set the frequency of all applications in a maximum position, press the "Max" button.

The mode Custom "Cust" is aimed to set any other frequency, different from "Min", "Norm", "Max".



To set unique frequency for a separate application, tap this application in the list of applications and set the unique frequency.

After that you will see the symbol  near the application.

This symbol blocks any frequency change for this application.

To unblock, tap the symbol with the stylus.

You can block any application listed in the application list.

After all the changes are completed press the "Accept" button.

Beaming.

FastCPU allow to send beams at any CPU speed and receive it in particular speed ranges which are different for various devices:

- DB devices (Palm III): 13 - 22MHz
- EZ devices (Palm IIIx, Palm Vx): 13 - 29MHz
- VZ devices (Visor Prism): 22 - 41MHz
- New VZ devices (Palm m500, Sony N710c): 30 - 41MHz

Graffiti stroke.

If FastCPU are already activated, to switch FastCPU action quickly (the attempt to connect to modem, Beam operation, etc.), you can use the following actions with the help of stylus:



Switching the FastCPU off

Switching the FastCPU on

Deactivating of FastCPU with a pen stroke in graffiti area is actual until it is activated in the same way or FastCPU being launched. This doesn't require reset operation. It is being recommended to use this procedure to deactivate FastCPU for the time of communication with other devices.

FastCPU registration.

For registration of the FastCPU press the (Menu icon)  button:



Then press the "Register" button and enter the code that you got after you'd purchased the program.

Uninstalling FastCPU

To delete the FastCPU program, launch this program and press the "Menu Icon" button.

In the appeared menu unselect checkbox: "Enable FastCPU", press "Ok", and then "Accept".

After that you can delete FastCPU in any standard way.

Solving of FastCPU Problems

In case of fatal error the FastCPU is to be disengaged by tapping screen area at any point during device resetting:

- 1) Reset your device using back reset hole
- 2) Quickly tap screen area and hold it until Preferences application shows

Note:

- Some frequency values can cause an unsteady operation when using the external keyboard and the Beam function.
- It is not recommended to turn on (turn off) any hacks (by Hackmaster) on the fly while FastCPU is running.

Free usage of the FastCPU is limited by time (14 days). If you want to buy it address to:

<http://www.megasoft2000.com>

We will appreciate all your remarks and comments that can be addressed to:

support@megasoft2000.com

This program is written by: Boris WM Sozin and Arthur Asloyan.

All rights reserved.

Megasoft2000 Ltd. (c) 1999 - 2002