

# **MegaDoc v.1.7**

Megasoft2000 Ltd.

Palm Software Division (PSD).  
Ulyanovsk,  
Russia.

Platform: Palm OS 3.0, 3.1, 3.3, 3.5 (B/W), 3.5 (Color)

## **System description:**

MegaDoc is a multifunctional program which is intended for viewing and editing main formats: .txt, .rtf, .doc, .html/htm, .pdb (Palm doc) and Memo (records of Memo Pad application). With this powerful program you gain control over desktop-like text formatting and editing features. It includes fonts and alignments selection, Undo/Redo operations and more.

MegaDoc Manager allows to convert these formats in the PC and to transfer them via its conduit direct to the Palm device. After viewing and editing the selected documents can be synchronized to the PC.

## **System installation:**

### **Note! Before installation make sure the date on your Palm device is valid (use Preferences application**

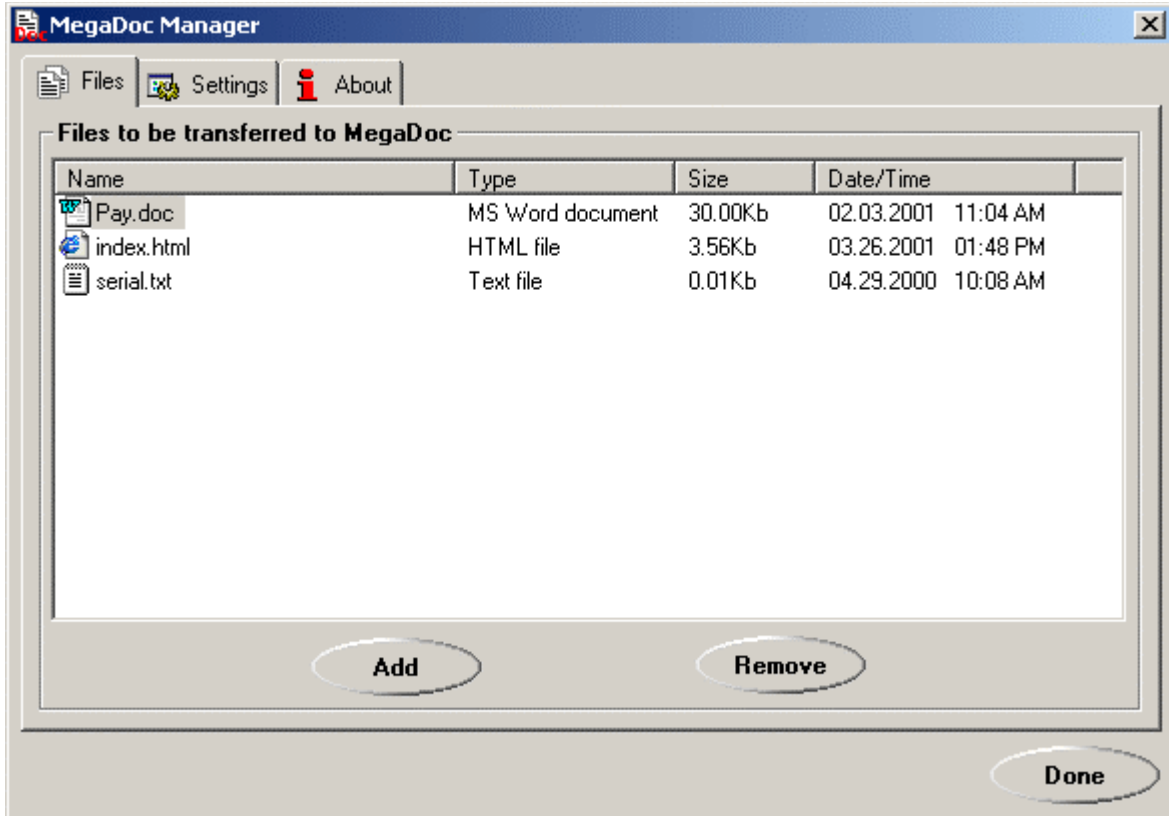
Before installing MegaDoc v.1.7 you must delete the previous version on your PC. Use "Uninstall MegaDoc" program to do this. Delete MegaDoc.prc application on your PDA (all your documents will be safe). To install the new version of "MegaDoc Manager" start "Setup.exe" program and install the applications on your PDA after this:

- MegaDoc.prc
- Commands.doc.pdb

## **System requirements:**

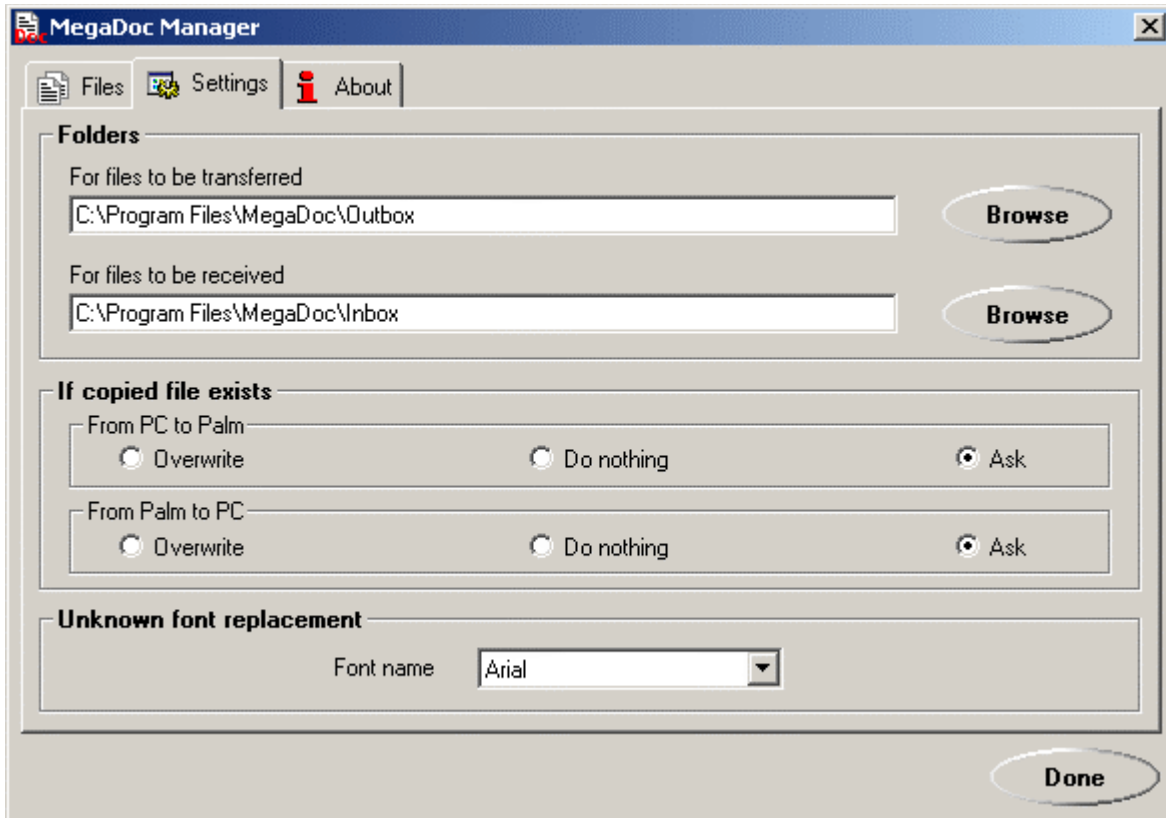
Attention! To move files with ". Doc" extension your PC should have MS Word installed. You can't move or get documents in MegaDoc if you don't have this program.

## MegaDoc Manager



Select documents and files to be converted with the help of the "Add" button. In order to delete a document or a file from the list you should mark it and then press the "Delete" button. To accept the selected list press the "Done" button, set your Palm device to the

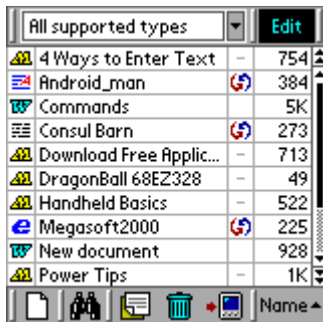
cradle and press the "Synchronization" button, as result all selected files will be transferred to the Palm device.



The folders are automatically preset for receiving and transferring documents, but you can replace them by the folders, which are more suitable for you.

Base font selection. This function is intended to select the Base font for generating DOC/RTF/HTM documents being transferred from Palm to PC. It is considered to be the standard Palm OS font. The extra bold and large fonts are selected in accordance with the Base font. The font size selection is available only for DOC/RTF documents.

## MegaDoc File Manager:



### Upper panel

MegaDoc allows you to do 2 types of document filter.

1. **Filter** – documents are filtered according to extension.
2. **Categories** – documents may be organized

in categories that can be changed or added. Switching of this option is done in “MegaDoc preferences”.

To change the category use “Drag and Drop” function, that is pull the chosen document into the filter list box and release. Choose the needed category and your document will move to this category.

The informational button - “Edit/Read” box indicates document mode at opening. To edit the document set the “Edit” mode by pressing the box, To read the document without editing press the “Read” mode in the box.

### Lower panel

1. New document
2. Document search
3. Rename document
4. Delete document
5. Beam the document to analogical device
6. Document sorting according to
  - Name
  - Type
  - Size
  - Date

Use “Drag and Drop” for items 3,4,5

### Document synchronization to PC:

To move documents to your PC put the “HotSync” symbol marker in the document bar. This marker guarantees the marked document synchronization to your PC after pressing the synchronization button on your PDA.

The documents that have “-“ sign can't be synchronized to your PC because they are the records of “Memo” application, that synchronizes automatically.

### Edit document

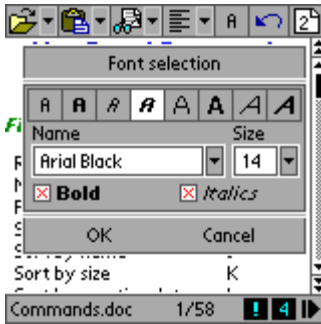


Set the “Edit” mode and open the document before editing. Some functions can be unavailable depending on the document extension. The upper menu is adjustable; the chosen instruments are unchangeable until you change (choose) another instrument.



1. Exit to "MegaDoc File Manager"
2. Save document

Even if you didn't manually save the edited document and press the exit button from "MegaDoc File Manager", the system will automatically ask the permission to save the last document.



Choose Fonts.

"A" - To change the font mark the text and press the chosen font.



Text alignment.

1,2,3,4 To change the alignment of the current or the marked paragraphs choose the type of alignment.

5. Bullet On/Off
6. Increase paragraph indent
7. Decrease paragraph indent



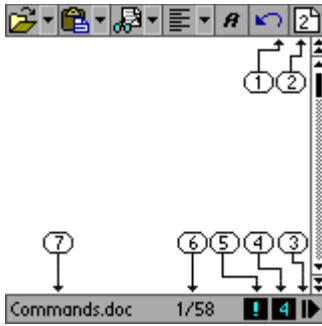
Edit document:

1. Insert the text from the clipboard
2. Copy the marked text
3. Cut the marked text



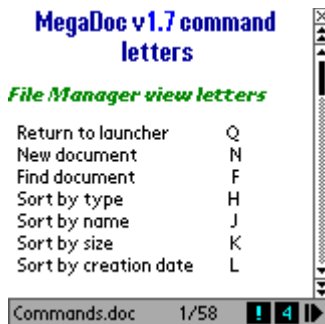
Service:

1. Full-screen mode
2. Text search in the document
3. Header level selection
4. Document contents
5. Text color change (only for color devices)
6. Background color change (only for color devices)



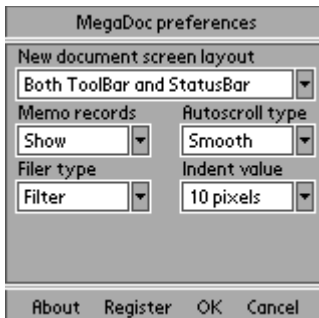
1. Undo/Redo.
2. MegaDoc has the opportunity to edit 2 documents simultaneously. Switch between the documents by pressing this button.
3. Automatic scrolling of the document. Press the same button to stop.
4. Automatic scrolling speed indication. To change the speed, press this box.
5. Bookmarks. Attention! Bookmark can be set only into the beginning of the paragraph.
6. Location indication in the document: the current bar/the total amount of the bars.
7. The name of the current document

## Read document



Before reading the document set the “Read” mode and open the document. The actions to operate this mode are analogical to the “Edit” mode. To exit to “MegaDoc File Manager” press “x” sign in the right upper corner. Scrolling can also be done by pressing the text area.

## MegaDoc preferences.



1. “New document screen layout” – interface customization on opening the new document.
2. “Memo records” – setting the Memo records display.
3. “Autoscroll type” – setting autoscroll “by lines” or “slide”
4. “Filter type” – choosing the display of the documents by extension or by categories
5. Indent value - Indent granularity

Free usage of the MegaDoc program is limited by time (14 days). If you want to buy it address to:

If you want to buy it address to:

<http://www.megasoft2000.com>

We will appreciate all your remarks and comments, which can be addressed to:

[support@megasoft2000.com](mailto:support@megasoft2000.com)

This program was written by: Boris WM Sozin, Alex Yukin and Arthur Asloyan.

All rights reserved.

Megasoft2000 Ltd 1999-2001.